

THE TSE CAMPAIGN  
2016 - 2020

---

## **Toulouse Talent - Global Impact**

---





## We owe our reputation to teamwork

Jean TIROLE

TSE Chairman,  
Nobel Prize  
for Economics, 2014

## SUMMARY

- p.5 • Our vision
- p.7 • Our talents
- p.10 • Key figures
- p.12 • Our future
- p.16 • Our governors
- p.18 • Your support

**TSE experts  
created an amazing  
place for young  
researchers.**

Susan ATHEY  
Professor of Economics  
Stanford University



**TSE is one of the  
best departments  
in the world.**

Olivier BLANCHARD  
Peterson Institute, MIT  
& former IMF  
Chief Economist



**TSE is undoubtedly  
one of the foremost centres  
of research and teaching  
in the world today.**

Amartya SEN  
1998 Nobel Prize Laureate  
Harvard University



**TSE has become  
a world-class  
research and teaching  
institution.**

Eric MASKIN  
2007 Nobel Prize Laureate  
Harvard University



**Join us in taking  
TSE even further:  
be part of the Toulouse  
Talent - Global Impact  
campaign.**

Ulrich HEGE  
TSE Director





# OUR VISION

## Economics can be a force for good in the world

Jean-Jacques LAFFONT

TSE founder, 1947-2004

In 1979 Jean-Jacques Laffont, world-class economist, returned to his hometown Toulouse from the USA. Visionary and entrepreneurial as he was, his dream was to combine the best of his different worlds to create a new model in France: an internationally renowned school of economics within a public university.

As Jean-Jacques used to say, “*Toulouse, c’est mon Amérique à moi*”. And so he gathered around him a strong group of like-minded colleagues committed to academic excellence, all determined for economics to have a real impact on society and everyday lives.

These so-called “*économistes de Toulouse*” steadily laid the foundations for what, 30 years later, has become Toulouse School of Economics, a thriving world-renowned center for research in economics chaired by Nobel-prize laureate Jean Tirole.

### ***TSE strives to:***

- provide solutions to today’s key economic and social issues
- promote excellence in research & higher education
- encourage pioneering interdisciplinary research
- connect research to policy, in France, Europe and worldwide
- implement highest international standards in its own governance



# OUR TALENTS

## A world-class research center in economics, connected to policy

The award of the Nobel Prize in Economics to Jean Tirole in 2014 came as a great recognition for TSE's achievements in its relatively short lifetime. Many other accomplishments make us proud, including a record-breaking number of European Research Council grants, top publications, high rankings and impactful recruitments.

TSE has always fostered an academic environment that nurtures a diverse range of international talent and expertise. We pride ourselves on attracting the best and the brightest to Toulouse from leading US and European institutions.

While TSE's unique atmosphere is hard to define, there is a palpable sense of a "TSE-style economics". Based on a broad range of academic interests and a deep sense of curiosity, open mindedness and an engrained culture of collaborative work, our approach is coupled with an appetite for tackling real-world problems and generating deployable policy solutions.



**“TSE is one of the very top economics faculties, incredibly strong in mechanism and market design.”**

Preston MCAFEE  
Microsoft Chief Economist



**“In Toulouse, theory is done in a way that's relevant to all questions in the world, and that's wonderful.”**

Abhijit BANERJEE  
MIT Professor





## OUR TALENTS

### An international graduate program

Our competitive international higher education programs within the University of Toulouse pioneer a novel approach to higher education in France.

While the core focus is economics, our courses are multidisciplinary and concentrate on the role that data and quantitative techniques play in decision-making in firms, institutions or states.

Mathematical modelling helps develop rigorous reasoning in complex situations and statistical and quantitative methods help to assess the impact of strategy changes and policy reforms.

In sum, our research-oriented courses train our students to master and adapt recent theories and techniques to solve the real-world challenges of their future employers.



“At TSE, students get the methodology and the tools to face a world that is getting more and more complex.”

Alexia LEE GONZALEZ FANFALONE  
TSE PhD student



“Several former TSE students have joined us and their analytical capabilities are a clear asset.”

Fabrice BRÉGIER  
Airbus CEO



## OUR TALENTS

### A pioneering interdisciplinary institute

In 2011 we launched the Institute for Advanced Study in Toulouse, IAST. Innovation in approaches and methods is engrained in our culture, as is the quantitative / empirical mix. IAST is a powerful example of this innovation at work. The scientific program involves nine social and behavioral sciences : anthropology, biology, economics, history, law, philosophy, political science, psychology and sociology. This is a unified scientific project whose aim is to study the behavioral of human beings as evolved biological organisms who live in groups, form networks and coalitions, are governed by formal institutions and informal norms, produce and exchange scarce resources and are inspired by ideals and beliefs.

Over its five years of existence, the IAST has made the transition from being a wholly unknown start-up to being a credible research institute with a growing international reputation and a novel way of working.



“IAST has become a major international research center, bringing together a quite extraordinary array of scholars in the equally extraordinary setting of Toulouse.”

Ian MORRIS  
Professor of History, Stanford



“It is when we consider the deepest questions about human nature and society that we recognize the important role of IAST.”

Mahzarin R. BANAJI  
Professor of Psychology, Harvard

## KEY FIGURES & EXPERTISE



FINANCIAL  
REGULATION



CLIMATE  
CHANGE

**200**

public debate  
contributions  
per year

**2<sup>nd</sup>**  
best research  
center in  
micro  
economics  
(RePEc)

**2**

Laboratories of  
excellence

**350**

conferences and  
seminars  
per year

**90**

nationalities

**40**

research  
partnerships



NETWORK INDUSTRY  
REGULATION



**Top 10**  
research center  
in economics in  
the world  
(RePEc)

**180**

peer-reviewed  
articles published  
per year

\*7 ERC “starting” grants and  
8 ERC “advanced” grants

**3<sup>rd</sup>**

beneficiary in  
Europe of EU  
support to economic  
excellence\*

**300**

international  
visiting scientists  
per year



PAYMENT  
SYSTEMS

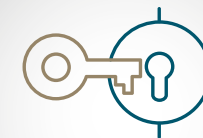


COMPETITION  
LAW

**2400**  
students

**75**

international  
academic PhD  
placements in  
5 years



INTELLECTUAL  
PROPERTY

**25**

years of connecting  
research to the  
corporate  
world

**180**

researchers



TWO-SIDED  
MARKETS





## OUR FUTURE

# OUR FUTURE

## Toulouse Talent - Global Impact

Investing in Toulouse today means investing in a thriving economic hub and a city of knowledge. Already heralded as the world's capital of aeronautics, the "pink city" is also a hub for cancer research, home to the Hyperloop research center, and an incubator for digital talent. Attracting more and more international talent, Toulouse is securing its reputation as a prime location for science, investment, innovation, advanced engineering, and of course, quality of life. A city with growing global impact.

TSE is proud to contribute to Toulouse's reputation. To sustain and expand our collective ambitions, we must continue to provide the best conditions for fostering distinctive innovation.

**We have hence launched our Toulouse Talent - Global Impact campaign with the aim of raising €50M.**

### Toulouse Talent - Global Impact has three main priorities:

- 1 / Solving key economic and social issues
- 2 / Educating the brightest future talent
- 3 / Offering an exciting location to foster innovation

## Solving key economic and social issues - €37M

Our goal is to encourage sustained multidisciplinary dialogue among researchers. While economics will always remain at the core of our activity, fascinating and often unexpected synergies emerge from an interdisciplinary approach, which is increasingly recognized as the future of top-flight academic endeavor.

### But we need more.

- More **endowed chairs** and **visiting professorships** to retain existing talent and attract new and exciting ones.
- More global debate-fueled **focus centers**, chairs and institutes to support agendas as well as people.
- More **interdisciplinary programs** supporting the appointment of senior scholars.
- More **research projects** on wide-reaching themes such as health, infrastructure, migration, religion and the ageing of populations.

### Key TSE research areas currently in need of your support:

- 1 / Climate change and energy
- 2 / Health behavior
- 3 / Sustainable finance



## OUR FUTURE

### Educating young talent - € 8M

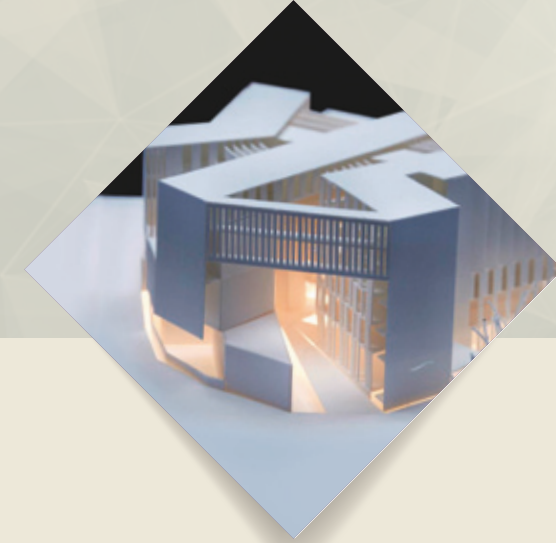
Educating tomorrow's top economists is key to our future footprint. Today's students are tomorrow's ambassadors, essential for carrying TSE's vision far and wide. This is therefore our second campaign priority.

We will fund a range of internationally competitive scholarships and boost our overall educational package, focused on careers and designed to the highest international standards, attracting the very best students from all over the world.

The resources raised will enable not only the training of talented individuals at doctoral and postdoctoral levels, but also the funding of scholarships to attract the brightest undergraduate students coming from all corners of the world.

#### You can help us offer:

- 1 / Undergraduate & graduate scholarships
- 2 / Postdoctoral fellowships
- 3 / Tailor-made career support services



## OUR FUTURE

### Offering an exciting location to foster innovation - € 5M

In 2019 a brand new building will host TSE, a purpose-built *chef d'oeuvre* designed by internationally-renowned Irish architects Grafton and located on the university campus in the historic center of Toulouse.

While funding has already been secured for the building itself, TSE needs to raise funds to provide faculty and students with the best work environment possible, making TSE an exciting, cutting-edge place to work, think and learn, with the best equipment and environment.

Naming opportunities will be available in the new building, from amphitheatres to experimental laboratories and outreach areas.

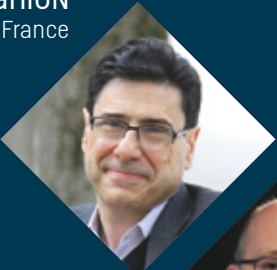
#### Thanks to your support we will be able to provide our faculty with:

- 1 / State-of-the-art digital facilities
- 2 / Purpose-built behavioural experiment laboratories
- 3 / Public outreach areas mixing art, culture and science



TSE SCIENTIFIC COUNCIL

Philippe AGHION  
Collège de France



Tim BESLEY  
LSE



Richard BLUNDELL  
UCL



Armin FALK  
University of Bonn



Drew FUDENBERG  
MIT



Jean-Marc ROBIN  
SciencesPo



Rachel GRIFFITH  
University of Manchester



Roger MYERSON  
University of Chicago



Ariel PAKES  
Harvard



Rafael REPULLO  
CEMFI, Madrid



Antoinette SHOAR  
MIT



Eric MASKIN  
Harvard



Tom SARGENT  
New-York University



Amartya SEN  
Harvard



Guido TABELLINI  
Bocconi University



IAST SCIENTIFIC COUNCIL

Mahzarin BANAJI  
Harvard University



Rob BOYD  
Arizona State University



Brandice CANES-WRONE  
Princeton University



Marion FOURCADE  
Berkeley University



Dora COSTA  
UCLA



Sergey GAVRILETS  
University of Tennessee



Gerard HERTIG  
ETH Zurich



Elizabeth GERBER  
University of Michigan



Cecilia HEYES  
Oxford



Louis KAPLOW  
Harvard Law School



Hanna KOKKO  
University of Zurich



Rachel E. KRANTON  
Duke University



Benoit MONIN  
Stanford University



Ian MORRIS  
Stanford University



Muriel NIEDERLE  
Stanford University



Joel MOKYR  
Northwestern



Amartya SEN  
Harvard



David PAPINEAU  
Kings College London



Drazen PRELEC  
MIT



Howard ROSENTHAL  
NYU



Thomas ROMER  
Princeton



Lawrence ROTHENBERG  
University of Rochester



Alan SCHWARTZ  
Yale Law School



Tom SNIJDERS  
Oxford and Groningen



Viviana ZELIZER  
Princeton





# YOUR SUPPORT

Our campaign aim is to raise €50M from corporation, foundations and individuals, in France and abroad. With that support we can deliver true global impact: your gift will make a real difference.

## How?

You can either make a donation to the general TSE endowment fund, or support a specific project such as an impact centre, a research programme, a professorship, a scholarship or a conference.

### Contact our campaign team

Send an email to: [support@tse-fr.eu](mailto:support@tse-fr.eu) or contact Karine Arcache : +33 (0)5 61 12 85 33

## Tax-efficient giving

### ► In the USA

American Friends of TSE, Inc. is a public charity exempt from Federal Tax under section 501 (c) (3), which enables US-based donors to benefit from full tax deductions.

### ► In Europe

Donors from an EU country wishing to making a gift to the TSE Foundation are eligible for tax benefits via the Transnational Giving Europe (TGE) network (<http://www.transnationalgiving.eu/>). For more information, please contact us.

### ► In France

Any donation made to the TSE Foundation by a French tax resident (individuals and corporations) provides tax benefits to the donor.

#### • For individuals

**66%** of any individual donation is deductible on up to **20%** of taxable income. If the donation exceeds the limit, the excess is carried forward for 5 years under the same conditions (Article 200 / C.G.I.).

**75%** of your donation is deductible on wealth tax (ISF), up to €50,000 per year.

#### • For corporations

Your gift is deductible on corporate tax up to **60%** within the limit of **5%** of your company's turnover. If the donation exceeds the limit, the excess is carried forward for 5 years under the same conditions (Article 238bis / C.G.I.).





**Toulouse School of Economics**

Manufacture des Tabacs  
21 allée de Brienne  
31015 TOULOUSE Cedex 6

[www.tse-fr.eu](http://www.tse-fr.eu)