

## 11<sup>th</sup> bi-annual Postal Economics conference on

# E-commerce, Digital Economy and Delivery Services

Toulouse, TSE, April 2<sup>nd</sup> – 3<sup>rd</sup>, 2020

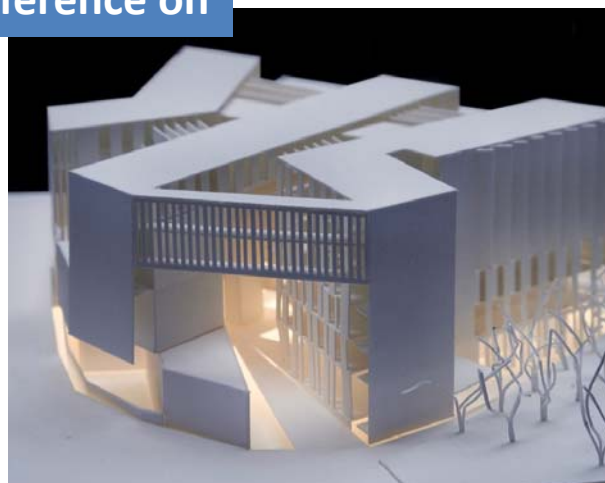
### SCOPE AND OBJECTIVES

This conference, co-sponsored by the **TSE-Partnership Foundation** and **Le Groupe LA POSTE** welcomes submissions of recent research contributions to the conference topics whether theoretical, econometric, or policy oriented. It is intended to foster exchanges between professionals and academic researchers.

### MAIN TOPICS

The 2014 conference has initiated a successful widening in the topics, beyond the traditional subject of postal economics. The digital revolution shakes up the sector. The development of electronic means of communication affects the core business of transport and delivery operators through multiple phenomena. Electronic substitution of mail and other postal products, growth of e-commerce and its impact on parcel delivery activity will have a crucial impact on the future of postal operators. To contribute to the study of these trends, we extend the scope of subjects to include e-commerce and digital economy. In addition to traditional postal economics issues, the range of topics for submissions includes, but is not limited to:

- **The economics of e-commerce and parcel delivery**
  - Relationships and business models of actors (e-retailers, delivery operators, ...)
  - The special case of marketplaces
  - Pricing and diversification strategies
  - Lessons from behavioral economics
  - Logistics issues related to e-commerce
- **The digital economy**
  - Reputation and trust issues
  - Personal data protection and privacy
  - Artificial Intelligence
  - Accessibility to public services in the digital age
  - Impact of digital technology on territories and regional planning
  - Postal users' needs in the digital age
- **Economic policy and regulation issues**
  - The regulatory environment of delivery, e-commerce and digital economy
  - Data-driven regulation
  - Competition policy issues
  - Allocation of space and urban logistics regulation



### SUBMISSION OF PAPERS

Papers should be submitted by **November 30<sup>th</sup>, 2019**. To pre-register and submit your abstract or paper, please [click here](#). Extended abstract will be considered but full papers (even drafts) will be given priority. Notification of acceptance will be given by **January 2020**. Completed papers should be available one month before the conference.

### SCIENTIFIC COMMITTEE

Claire Borsenberger (Groupe La Poste), Catherine Cazals (TSE), Helmuth Cremer (TSE), Jacques Crémer (TSE), Eric Gautier (TSE), Denis Joram (Groupe La Poste), Bruno Jullien (TSE), Jean-Marie Lozachmeur (TSE), John Panzar (Northwestern University), Patrick Rey (TSE), Jean Tirole (TSE).

### CONFERENCE COMMITTEE

For details on scientific matters, please contact Catherine Cazals or Helmuth Cremer. Further information will be available through [our website](#)



**CONTACT:** Christelle FAUCHIE (conference secretariat)

For any further information, please send an email to [postconf@tse-fr.eu](mailto:postconf@tse-fr.eu)

On-line registration for conference attendance will be available from Nov. 25, 2019 to March 20, 2020.